

Red Trail - Orchard Loop .36 mi

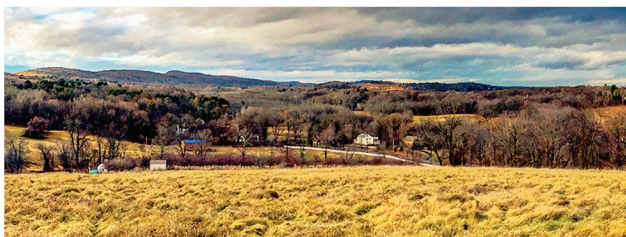
This trail takes you around the orchards at Auerfarm.

As you start your walk up the hill you will see the dwarf orchard.

Once at the top you will see the old orchard which used to take up entire hill. As you walk up the drumlin in the summer you will see plenty of grassland birds including bobolinks and maybe even a box turtle.

Bluebirds are visible here all year as well. Once at the top you are greeted with stunning views of the Connecticut River Valley and the east side of Talcott Mountain.

In the winter you have a bird's eye view of Hartford.



Orange Trail - Farm Trail .39 mi

This trail goes from the apple barn to the circle and takes you through the heart of the farm. You will pass through meadows, grasslands and a brook.

In the summer look out for swallows and red-winged blackbirds. The meadows also offer stunning native wildflowers from spring through the fall. When you pass the brook, stop and enjoy one of our outdoor classrooms.

Purple Trail - Bog Trail .2 mi

Take a stroll on our family-friendly trail through the wetlands on the "board-walk".

This is a great trail to observe the four seasons: watch the wetlands come to life in the spring and summer and become dormant in the fall and winter. On the board-walk look for native plants such as spice bush, red twig dogwood, and jewel weed.

Green Trail - Garden Loop .36 mi

Starting at the circle this trail brings you to the west towards the herb and lavender gardens. This is a great place to take a break and enjoy the beauty of the farm.

The trail also brings you past the Foodshare garden, elderberry patch and livestock pasture.

After exploring all the gardens stop by the animal barn and say hi as you head towards the Children's Garden. The trail then loops back to the circle.

Blue Trail - Blueberry Trail .22 mi

For this trail, start to the south of the circle and head past the old red storage barn.

Once you are past the buildings you will see one of our larger growing spaces. Turn west towards the blueberries. Blueberry picking is open in July. In the summer you will see Baltimore Orioles trying to eat all the berries.

Once you are past the berries you will see one of our younger sugar bushes and the future outdoor classroom. After exploring and playing in nature the trail loops by Auer Community Garden and Raspberry patch.

Yellow Trail - Mushroom Trail .2 mi

The yellow trail takes you to the quiet side of the farm. Starting from either the apple barn or from the orange trail you will start heading to the northern side of Auerfarm.

Starting from the orange trail you will pass by wetlands to the west and hayfields to the east until you reach the edge of the property. Once you reach the north side you will begin to head towards the east to the Mushroom Barn overlook. From the overlook you will have a birds eye view of the mushroom barn with its historic clay tiles. This is also a great spot to enjoy some of Auerfarms raptors as they hunt over the fields.

At this point you will begin heading south back towards the apple barn to complete the loop. If you start from the apple barn you can reach the overlook quickly and head back to the main trails without walking the entire loop.



Auer Trail Map









**Please do not feed any animals you may encounter at Auerfarm.
Please do not touch the fences.**

Open from dawn to dusk

**158 Auer Farm Road, Bloomfield CT
www.auerfarm.org**

Farm Trail Map

-  Orchard Loop
-  Farm Trail
-  Blueberry Loop
-  Garden Loop
-  Bog Trail
-  Mushroom Barn Loop

Auerfarm Buildings

1. New Classrooms
2. Farm Store
3. Learning Center
4. Science Center
5. Pavilion
6. Animal Barn
7. Sugarhouse
8. Haybarn

Bathrooms available in buildings 1 and 3.

